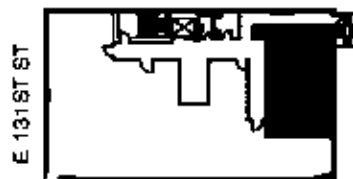
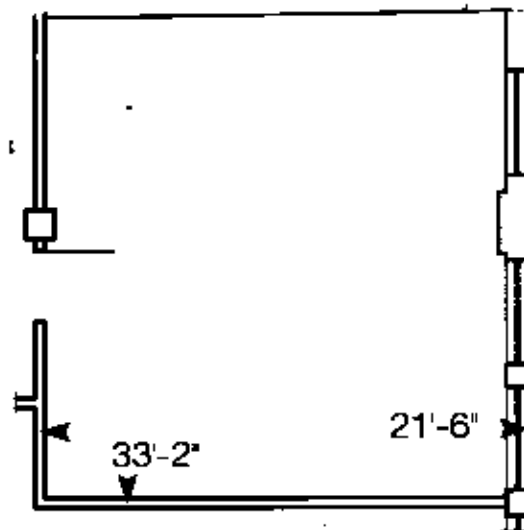


68-72 EAST 131ST STREET, NEW YORK

Suite 701

654 Rentable Square Feet

RENTAL OFFICES: 212-926-0012 and 212-751-4200



KEY PLAN - 7TH FLOOR



DRAWING MAY NOT BE TO SCALE
ERRORS AND OMISSIONS EXCEPTED
ALL DIMENSIONS ARE APPROXIMATE AND MAY VARY
RENTABLE AREA INCLUDES A SHARE OF SERVICE AND COMMON AREAS SUCH AS LOBBY, HALLS, STAIRS, ELEVATORS, MECHANICAL ROOMS AND WASHROOMS



AVAILABLE POWER 50 AMPS
INSTALLED BTUH = 16,000

UNIT HEIGHT = 9'-7"
FLOOR TO BOTTOM OF JOISTS

FLOOR LOAD CAPACITY = 120 PSF
1 ELEVATOR

WEBSITE: www.yellowbrickloft.com